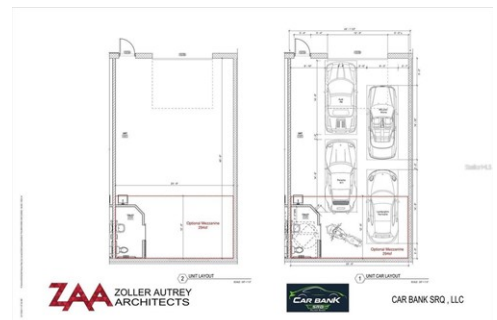




\$ 429,000



6562 Palmer Park Cir # 10, Sarasota, FL 34238

- » MLS #: A4615804
- » Condominium | 1,008 ft<sup>2</sup>
- » More Info: [6562PalmerParkCir10.IsForSale.com](https://6562PalmerParkCir10.IsForSale.com)



**Joanna Benante**  
 941.356.7718  
[joannabenante@michaelsaunders.com](mailto:joannabenante@michaelsaunders.com)  
<https://martinbenante.com/>

**Michael Saunders & Company**  
 LICENSED REAL ESTATE BROKER  
 Sales Office  
 61 S. Blvd of the Presidents  
 Sarasota, FL 34236  
 (941) 388-4447

Remarks

One or more photo(s) has been virtually staged. Pre-Construction. To be built. A luxury, garage condominium community is coming to Palmer Ranch Sarasota! Car Bank SRQ is a private, personal warehouse facility for the ultimate car collectors, motorsports enthusiasts, and RV/Boat owners. At Car Bank SRQ, owners will have 24/7 access to the gated community of 18 total, concrete block construction garage condominiums, all with low monthly HOA fees. Your personal warehouse is climate controlled, secure and private and each individually owned condo will have a generous half bathroom, HVAC, and utility sink. Owners have the ability to customize the interior with a mezzanine/loft (increasing the total square footage on average of 400 sq ft), cabinets, car lift, flooring, and/or anything you can imagine! Car Bank SRQ amenities include a car wash detail bay, and RV clean out station. Each unit is approximately 42'D x 24' W, with 20' ceilings and 14' H x 12' W garage doors. Each garage condominium will have fire sprinklers and a monitored fire alarm. Unit #10 is an end unit with 2 extra transom windows on the side for privacy plus more natural light. Located in Palmer Ranch. close to "dealershin row" and stens to the I enacv Trail. Convenient access to downtown Sarasota. Siesta Key. Casey Key. and 2

